



PlayStation

NTSC U/C

PlayStation™

# DOOM DOOM

LOAD YOUR LIGHT GUN  
AND LAY DOWN  
THE LAW



SLUS-00630  
1000300.221.US





**WARNING: READ BEFORE USING YOUR PLAYSTATION™ GAME CONSOLE.**

A very small percentage of individuals may experience epileptic seizures when exposed to certain light patterns or flashing lights. Exposure to certain patterns or backgrounds on a television screen or while playing video games, including games played on the PlayStation game console, may induce an epileptic seizure in these individuals. Certain conditions may induce previously undetected epileptic symptoms even in persons who have no history of prior seizures or epilepsy. If you, or anyone in your family, has an epileptic condition, consult your physician prior to playing. If you experience any of the following symptoms while playing a video game – dizziness, altered vision, eye or muscle twitches, loss of awareness, disorientation, any involuntary movement, or convulsions – IMMEDIATELY discontinue use and consult your physician before resuming play.

**WARNING TO OWNERS OF PROJECTION TELEVISIONS:**

Do not connect your PlayStation game console to a projection TV without first consulting the user manual for your projection TV, unless it is of the LCD type. Otherwise, it may permanently damage your TV screen.

**HANDLING YOUR PLAYSTATION™ DISC:**

- This compact disc is intended for use only with the PlayStation™ game console.
- Do not bend it, crush it or submerge it in liquids.
- Do not leave it in direct sunlight or near a radiator or other source of heat.
- Be sure to take an occasional rest break during extended play.
- Keep this compact disc clean. Always hold the disc by the edges and keep it in its protective case when not in use. Clean the disc with a lint-free, soft, dry cloth, wiping in straight lines from center to outer edge. Never use solvents or abrasive cleaners.

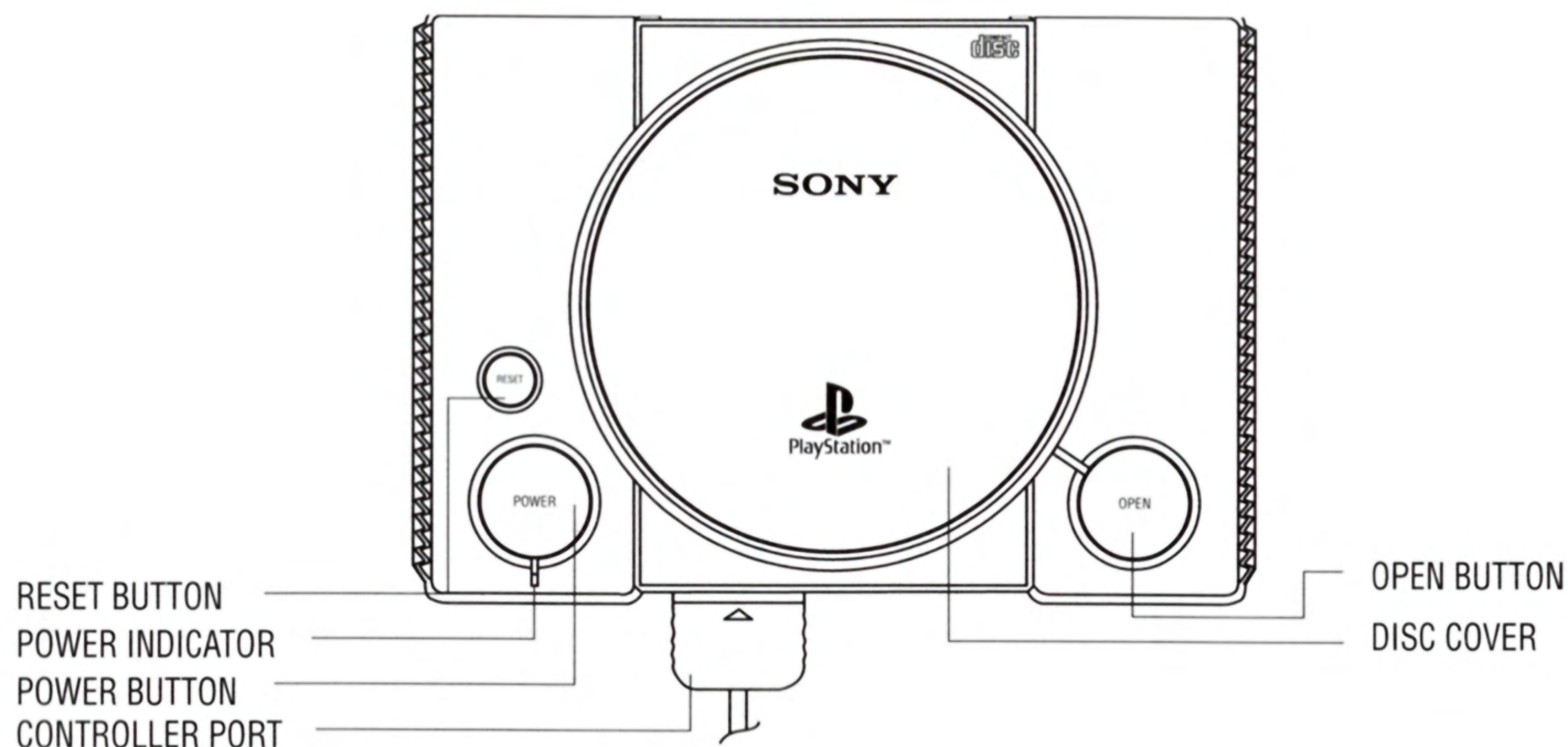


# TABLE OF CONTENTS

Starting Up.....	2
Game Controls .....	3
Introduction .....	5
Main Menu .....	6
Hit the Streets .....	11
Power-Ups .....	13
End of Level Information.....	14
Using Credits & Game Over .....	16
High Score Table .....	16
Two Player Mode .....	16
Credits .....	18
Customer Support.....	19
Software License Agreement .....	20



# STARTING UP



- Set up your PlayStation™ game console according to the instruction manual.
- Make sure the power is off before inserting or removing a compact disc.
- Insert the Judge Dredd disc and close the disc cover.
- Insert game controllers and turn on the PlayStation game console.
- Follow the on-screen instructions to start a game.



# GAME CONTROLS

## LIGHT GUN

Using the light gun, aim directly at the screen to target or highlight an option.

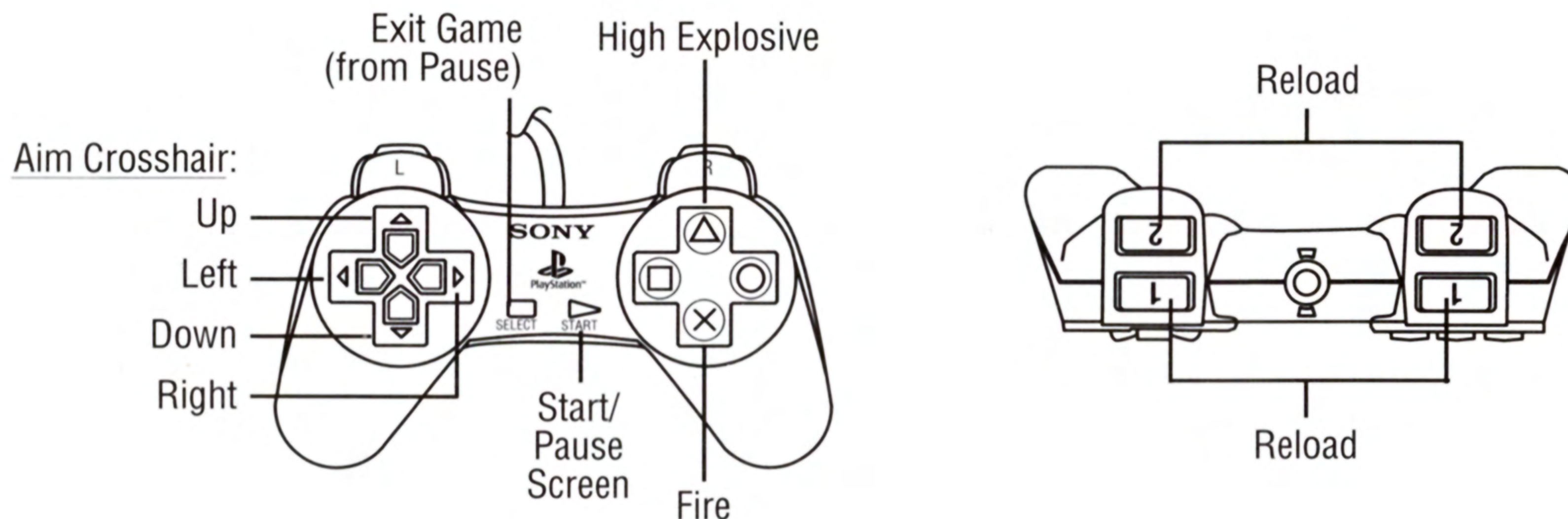
<b>Fire</b>	Trigger
<b>Reload</b>	Aim off the side of the screen and press Fire
<b>High Explosive</b>	Special
<b>Start/Pause Screen</b>	Start
<b>Exit game (from Pause)</b>	Special

Light guns work best when pointed directly at the monitor in a room with low ambient light. Check that the light gun is calibrated properly for the game (refer to Controller Calibration on page 10). It can also help to adjust the brightness and contrast on your monitor if the results are erratic or inaccurate.

*Judge Dredd* supports only PlayStation licensed light guns and other peripheral devices. Guns and other devices that are not officially licensed by PlayStation may not be fully compatible and you may experience decline in performance. Look for the PlayStation logo on officially licensed peripherals.



## STANDARD CONNROLLER



To select menu items use the **Directional Buttons up/down** to highlight the option you want to select and press the **X** button to accept.

There are two different control devices available which can be used throughout the game. Ensure that the device you are using is connected to the PlayStation and operating correctly.

### GAME RESET

To abort the game, press the **Start** button to pause the game and display the pause menu. Press **Select** on controller or **High Explosive** button on the Light Gun. Choose **Quit Game** from this menu, and then highlight and select **Yes** to return to the Main menu screen.



# INTRODUCTION

The time is the 22nd Century. The place is planet Earth. Most of the world's population is concentrated in vast megacities. Outside, danger lurks, aliens and muties prowl.

Within these cities there are no police, no trials and no juries, only the Judges. With the power of instant sentence, a Judge's courts are the streets and a Judge's word is the law. Their duty is to seek out lawbreakers wherever they may be found and to administer justice, without mercy or favor. This is the world of *Judge Dredd*.

Tech Judge Bean has escaped from the prison moon Titan and he's looking for revenge. Together with an army of androids and a deadly arsenal of weapons, he wants you to make the first move. He wants you, *Judge Dredd*, to go in and try to stop him.

You must battle through the dangerous city to catch Tech Judge Bean. The Judge's standard-issue gun is a deadly, multifaceted hand weapon with automatic focus and targeting, that uses a computer capable of controlling its operation. It has the ability to fire standard bullets, armor piercing bullets, heat seekers, and high explosive devices. This is the Lawgiver.



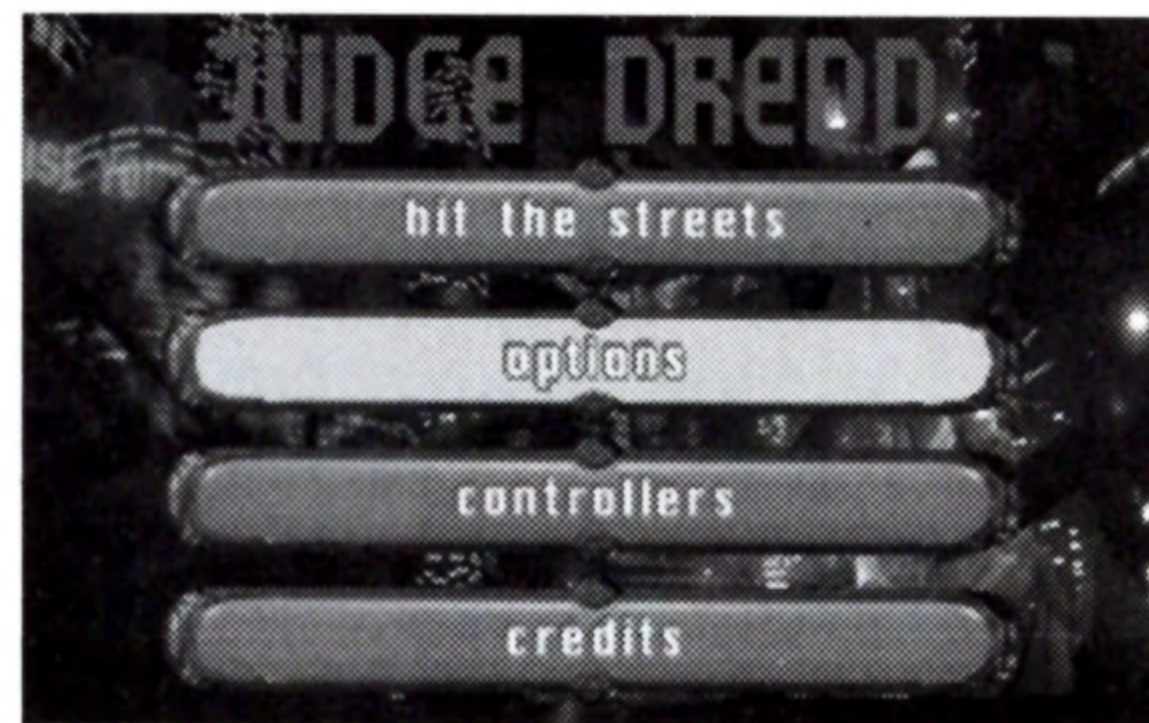


## MAIN MENU

When you first load the game, you will be presented with the Main menu, which contains various options and settings available for the game. To operate these menus, you can highlight the item you wish to use by aiming the light gun directly at it. Alternatively, you can use the D-Pad directional button to move the highlighter bar. Pressing  $\times$  will then select the highlighted option (refer to Game Controls on page 3 for details about the different control devices available). Within each of these menu screens you will be presented with a variety of options that will either display another screen, or allow you to adjust certain game settings.

Some of these options use a dial to indicate their current setting or level. This can be increased and decreased, by highlighting and selecting the **plus** or **minus** (+/-). The current levels of these options are indicated by the dial at the center of the option bar.

The other options operate as an On/Off switch. These can be switched by highlighting and selecting either **On** or **Off**. Their current





setting is displayed within the central red bar. To exit back to the Main menu, press  $\Delta$ .

If the game is left on the Main menu for a while, it will automatically start demo mode. To exit demo mode and return to the Main menu, press any button on the controller or light gun.

## HIT THE STREETS

Highlighting and selecting this option will exit the Main menu and start the game, see Hit The Streets on page 11 for full details.

## OPTIONS

On this screen are several game preferences that can be adjusted. Highlighting and selecting the Sound or Video menu bars will take you into new menu screens with further options that you can adjust.



### *Sound*

Highlighting and selecting the Sound option will present you with the following options:

- **SFX Volume** – Highlighting and selecting the plus or minus (+/-) buttons will adjust the level of this dial and alter the sound effects volume.
- **Music Volume** – Highlighting and selecting the plus or minus (+/-) buttons will adjust the level of this dial and alter the music volume.

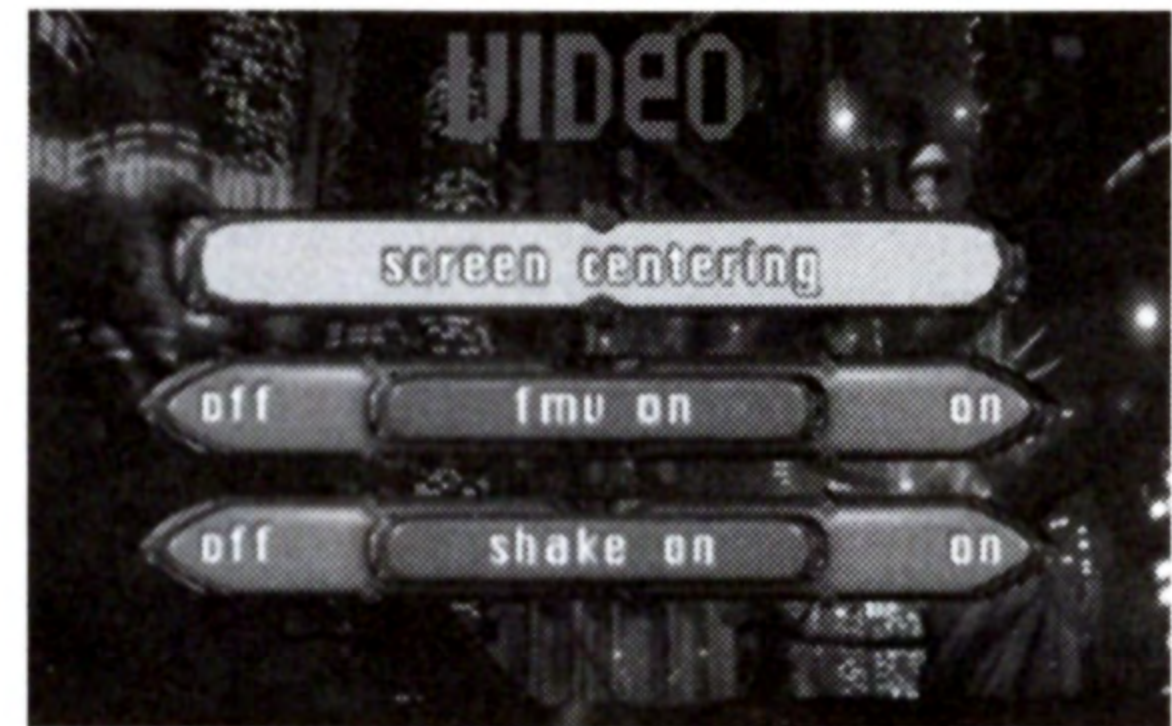




- **Stereo On/Off** – Highlighting and selecting the On or Off options will switch between stereo and mono sound.
- **Music On/Off** – Highlighting and selecting the On or Off options will switch the music on or off.

## ***Video***

Highlighting and selecting the Video option will present you with another screen:



- **Screen Centering** – This option will take you into another screen where you can adjust the position of the game display on your monitor. Highlight and select the arrows to adjust the horizontal and vertical position of the display. Once you have finished, press High Explosive to exit.
- **FMV On/Off** – Highlighting and selecting the On or Off options will switch the full motion video to either on or off.
- **Shake On/Off** – Screen shake occurs when you are hit by enemy fire. Highlighting and selecting the On or Off options will switch screen shake on or off.

## ***Difficulty Level***

There are three options for selecting the difficulty level of the game. You can choose between either Easy, Medium, or Hard. Changing the difficulty level will adjust the standard of the power-ups that can be collected throughout the game. As this level is set higher, the effect of the power-ups will become less. The enemies are also affected by this setting. For example, as the difficulty level is set



higher, the enemies become more powerful and require many more hits to be destroyed! The difficulty level is set to Medium when you load the game, unless alternative settings have already been saved to a memory card.

### ***Save Status***

This option allows you to save all of your scores and settings to a memory card. Ensure a memory card is inserted into memory card slot 1. Memory card slot 2 is not used in this game. When you highlight and select this option, you will be presented with the question “Are you sure you wish to save?” and two further options:



- **Confirm Save** – Highlight and select this option if you wish to store the game details onto a memory card. If you have saved to the same memory card before, you will be asked if you want to overwrite the previous save information. Highlight and select Yes if you want to overwrite the old file, otherwise highlight and select No to cancel the operation and return to the Options menu.
- **Cancel Save** – Highlight and select this option if you wish to cancel the save action and exit this menu.

All of the information stored on the memory card will automatically reload next time you play *Judge Dredd*.

**Warning:** Never remove or insert memory cards during saving, loading, or formatting. Make sure there are enough free blocks on your memory card before commencing play. Refer to the instructions supplied with the memory card for more details.



## CONTROLLER CALIBRATION

By highlighting and selecting the Controllers option, you will be presented with a screen for setting the control device for each player. The game will automatically detect what type of device is connected to each controller port of the PlayStation.

- **Light Gun** – If a light gun is connected, there will be an option labelled Gun Calibration. Highlighting and selecting this will take you into the calibration screen. To calibrate the light gun, you must aim and fire at the white squares. Firstly shoot the white square in the top left corner five times. Then shoot the white square in the bottom right corner five times. Once this is completed you will be presented with a screen showing the test marker for the light gun. If you are satisfied with the settings, highlight and select the **Accept** option, otherwise you can press **High Explosive** to cancel gun calibration.
- **Controller** – If you are using a controller, there will be an option labelled Controller Calibration. Within this screen are two further options: Controller Speed and Test. The current controller speed is indicated by a circular dial. This can be increased or decreased by highlighting and selecting the plus or minus (+/-). As you adjust this setting, the speed of the crosshair within the game will be adjusted accordingly. Highlighting and selecting Test will present you with a screen displaying a cursor which is operated by your controller. Pressing the × button will exit this screen. Once you are satisfied with the changes, press Δ to exit back to the Main menu.





**Warning:** It is advisable that you do not insert or remove any peripherals once the power is turned on. A controller or light gun must always be inserted into controller port 1 in the console while playing the game.

## **CREDITS**

Lists all the punks who made this game.

## **HIT THE STREETS**

Using the Lawgiver gun, kill as many of the enemy androids as possible. Remember to destroy the gun turrets and combat vehicles that you will also encounter along the way. Just ensure that you don't hit any innocent people in the crossfire! They can be identified by their panicked waves as you blast away!

You can aim at the targets with either the light gun or the crosshair, then use Fire to shoot. The High Explosive action provides you with a short sharp blast, that will destroy most enemies in a single shot. Use these sparingly though, as you will only have one charge to start with. Extra charges can be picked up along the route, as well as the other bonuses. Some light guns are fitted with an Autofire option, but that's cheating and The Judge don't cheat, so we're not going to let you use it! Don't worry though, you can collect power-ups for your weapon, such as Scatter, Rapid Fire, and Heat Seekers!

Remember to reload your weapon as you progress, otherwise you can find yourself having very little effect on the situation. But be careful, over using the reload action can cause the Lawgiver to jam!



There is certain information displayed on the screen throughout the game, to inform you of your progress:

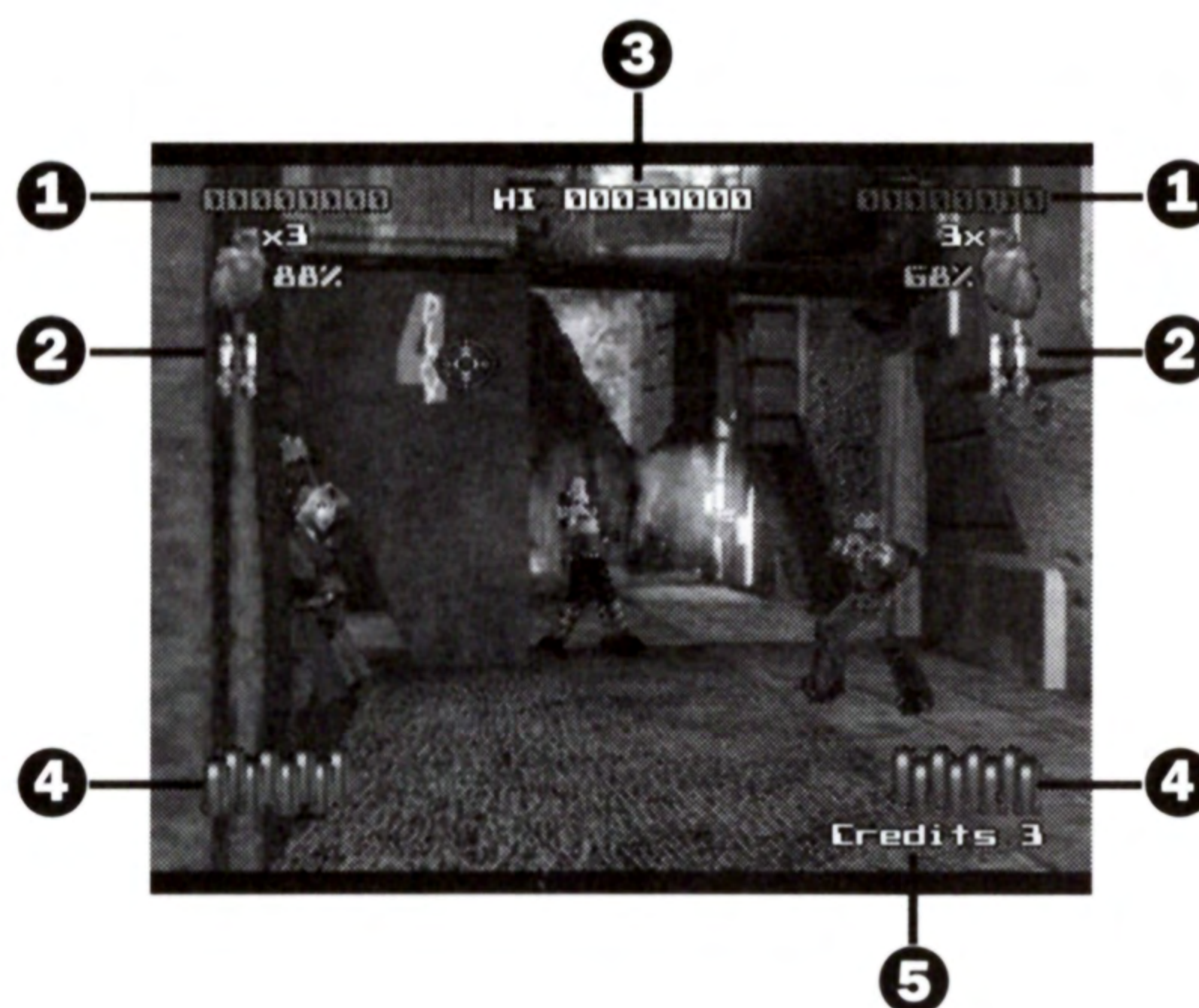
**1 Player Status** – This gives you information about your score, number of lives, and your percentage of health remaining.

**2 High Explosive** – This shows how many High Explosive charges you are carrying (if any). Extra charges can be collected as you move through the stages.

**3 Current High Score**

**4 Bullets and Weapons** – This displays the type of weapon currently in use and the amount of ammunition currently available. Remember to use the reload feature if you exhaust your current ammunition.

**5 Credits** – This shows the number of credits remaining for the current game. The limited number of credits allows you to continue the game once all your lives have been lost. When you have lost all of your lives and used all of the credits, then you will receive a Game Over message and must restart from level one.





## POWER-UPS

Throughout the game, there are background items to shoot as well as the enemies themselves. Destroying different parts of the background will reveal power-ups, which can be collected with a good shot. The power-ups available are:



This is the High Explosive weapon. It gives a short blast that can destroy most things on the screen.



Doubles your ammo so you can fire sixteen shots before reloading.



Scatter with automatic reload. Fires eight shots in a scattered pattern, so you can fire without perfect accuracy.



Armor Piercing Bullets which cause twice as much damage.



Rapid Fire Automatic Gun. Just hold down the trigger and reel off the bullets!



Heat Seeking Bullets which can be fired without being perfectly aimed at their target.



Creates a temporary shield, which can absorb any shots fired at you.



The Medi-Kit will restore your health to 100%.



Provides you with one extra life. You will also receive an extra life for every 50,000 points.



## END OF LEVEL INFORMATION

At the end of each stage you will be presented with a series of details about your performance. This will detail:

- Perps Killed** Adds a bonus of 100 points to your score for every perpetrator killed. If every perpetrator is killed, then you will receive an additional bonus of 1000 points.
- Perps Missed** Deducts 50 points from your score for every perpetrator that escaped.
- Bonuses Missed** Displays the bonuses and power-ups that were missed in the stage. If you collect them all, you will be awarded an extra bonus of 500 points.
- Shot Accuracy** Percentage of your shots on target. You will receive 10 points for every percent of accuracy. If you score over 70%, you will receive 1000 bonus points and one High Explosive charge, but if you score over 90% accuracy, you will be awarded 2000 bonus points and an extra life!
- Destruction Bonus** You will receive 10 bonus points for every shot of damage to the background.
- Streak Bonus** Bonus Crystal for accurately killing a number of enemies without missing a shot. Hit five enemies for a Red Crystal (500 points), eight enemies for a Green Crystal (1000 points) and twelve enemies for a Blue Crystal (2000 points).



If you wish to skip the end of stage information and continue, press  $\times$ . It is also possible to adjust some of the game options before continuing with the next level. By using either High Explosive on the light gun, or the **Select** button on the controller, you can return to the Main menu. From here, you can adjust the game settings, or use the memory card options. Refer to the Main menu section on page 6 for details. When you have finished with the Main menu, you can return to the same point where you have just left off, by selecting **Return To The Streets**.



## **PAUSE MODE**

Using the Pause action will freeze the game in its current position. To continue this game, use the Pause action a second time. Once in Pause mode, you can also quit and exit back to the Main menu. Using either High Explosive on the light gun, or the **Select** button on the controller will present you with the question “Are you sure you want to quit?” If you do want to quit the game and exit back to the Main menu, highlight and select **Yes**. If you wish to cancel and continue from where the game was paused, highlight and select **No**. Please note that you cannot pause the game during the last few seconds of any stage.

## **THE FULL MOTION VIDEO**

Much of the story is told through the video (FMV) sections. These can be skipped at any time by using Fire or the Start button, or they can be switched off in the Video menu.



## USING CREDITS & GAME OVER

When you lose all of your lives, you will receive a prompt asking if you would like to continue and given ten seconds to make your choice. If you do want to continue, just press the Start button, otherwise just allow the timer to reach zero. Once you have run out of credits, you won't be allowed to continue any further and must restart.

## HIGH SCORE TABLE



If you have achieved a high enough score, you will be asked to enter your name into the high score table. To key in your name, highlight and select the letters you wish to enter. If you make a mistake, highlight and select the back arrow to delete the last character entered.

Once you have finished entering your name, highlight and select the return arrow in the bottom right corner. You will then be presented with the full high score table containing your results. If you don't wish to enter your name on the table highlight and select the return arrow. After you have seen the high score table you will be returned back to the Main menu.

## TWO-PLAYER MODE

In two-player mode, player one must operate all of the options and menus, then highlight and select **Hit the Streets** to start the game. Once started, a prompt will appear in the top corner of the screen instructing player two to press Start. If player two then presses Start, he or she will join player one in the action!



Player one's details are on the left half of the screen, while the details for player two are on the right. This includes all of the same information as for a one-player game, except that the reload message will appear on the left for player one and on the right for player two. As well as this, both players must share the limited number of credits and the overall difficulty level of the game is increased.

While there are plenty of bonuses to collect throughout each level, it isn't just a matter of "the first to shoot it, gets it." If one player collects a bonus it can be seen floating down to that player, but if the other player shoots the bonus, the bonus switches sides and becomes theirs. That is, if the other player doesn't shoot the bonus again before it reaches the bottom of the screen!

Time for work, *Judge Dredd*...





# GREMILIN CREDITS

Producer	Steven Zalud
Lead Programmer	Jim Tebbutt
Lead 3d Artists	Syd Franklin Dave Lewis
Character Models and Additional Graphics	Matt Sandford Nick Tipping Mick Hirst
Front End Programmer Additional Programming	Alex Ferrier Phil Rankin Paul Hiley Jacob Habgood
Motion Capture Engineers	Mick Sheehan Rob Millington Tony Wills
Capture Artists	Alex Kelly Brian Aiken
Product Support	Rob Millington Simon Short
In-Game Sound Effects	Raymond Usher
In-Game Music	Stuart Ross
Background Sound Effects	Allan Walker
Manual	Richard Cartwright Martin Calpin
Artwork	Simon Bizley
Artwork Digital Manipulation	System 23
Localization	Sarah Bennett
Software Manager	Tim Heaton
Creative Manager	Pat Phelan
QA Manager	Carl Cavers
Test Supervisor	Jon Watson
Test Support	James McCarthy
Lead Tester	Julia Sturman
Testers	Stephen Woodward Matt Tuckett Eric Booker Travis Ryan

## FMV Cast

Judge Dredd  
Royston Bean  
The Mayor  
Chief Judge  
Control Judge  
Bodyguard  
Litter Geek

Richard Waters  
Christopher Wilkinson  
David Frederickson  
Marc Finn  
Tina Pelini  
Ade Carless  
Ricki Martin

## FMV Crew

Editor, Producer & Director  
Director of Photography  
Camera Operator  
Scriptwriter  
Music  
Costume Stylist  
Make-up Designer  
Make-up Assistant  
Prop Construction  
Live Special Effects  
Graphics & Storyboards  
Production Assistance

Alan Coltman  
Mark Clayton  
Darren Mills  
Alan Coltman  
Pat Phelan  
Jon Musson  
Abigail Graves  
Judith Crowe  
Nik Hull  
Cyberteknix  
Les Spink  
Ade Carless  
Steve Zalud  
Keith Dando  
Darren Mills

Digital Special Effects



# CUSTOMER SUPPORT

## *Online Services with Activision Forums, E-Mail and File Library Support*

- **Internet:** support@activision.com or <http://www.activision.com>
- **America Online:** Use keyword "Activision" to locate the Activision forum.
- **CompuServe:** 76004,2122 or [GO ACTIVISION]
- **Activision BBS:** (310) 255-2146 Up to 33,600 Baud; Settings: 8 Bits, No Parity, 1 Stop Bit (8, N, 1)

## *Other Contact Methods*

**Fax** (310) 255-2151, 24 hours a day

**FaxBack** (310) 255-2153, 24 hours a day

**Mail** Activision, Customer Support, P.O. Box 67713, Los Angeles, CA 90067

**Phone** Call our 24-hour voice-mail system for answers to our most frequently asked questions at (310) 255-2050. Or contact a customer service representative at the same number between the hours of 9:00 a.m. and 5:00 p.m (Pacific Time) Monday through Friday, except holidays.



## SOFTWARE LICENSE AGREEMENT

**IMPORTANT - READ CAREFULLY:** USE OF THIS PROGRAM IS SUBJECT TO THE SOFTWARE LICENSE TERMS SET FORTH BELOW. "PROGRAM" INCLUDES THE SOFTWARE INCLUDED WITH THIS AGREEMENT, THE ASSOCIATED MEDIA, ANY PRINTED MATERIALS, AND ANY ON-LINE OR ELECTRONIC DOCUMENTATION, AND ANY AND ALL COPIES AND DERIVATIVE WORKS OF SUCH SOFTWARE AND MATERIALS. BY OPENING THIS PACKAGE, INSTALLING, AND/OR USING THE PROGRAM, YOU ACCEPT THE TERMS OF THIS LICENSE WITH ACTIVISION, INC. ("ACTIVISION").

**LIMITED USE LICENSE.** Activision grants you the non-exclusive, non-transferable, limited right and license to install and use one copy of this Program solely and exclusively for your personal use. All rights not specifically granted under this Agreement are reserved by Activision. This Program is licensed, not sold. Your license confers no title or ownership in this Program and should not be construed as a sale of any rights in this Program.

**OWNERSHIP.** All title, ownership rights and intellectual property rights in and to this Program and any and all copies thereof (including but not limited to any titles, computer code, themes, objects, characters, character names, stories, dialog, catch phrases, locations, concepts, artwork, animation, sounds, musical compositions, audio-visual effects, methods of operation, moral rights, any related documentation, and "applets" incorporated into this Program) are owned by Activision or its licensors. This Program is protected by the copyright laws of the United States, international copyright treaties and conventions and other laws. This Program contains certain licensed materials and Activision's licensors may protect their rights in the event of any violation of this Agreement.

### YOU SHALL NOT:

- Exploit this Program or any of its parts commercially, including but not limited to use at a cyber cafe, computer gaming center or any other location-based site. Activision may offer a separate Site License Agreement to permit you to make this Program available for commercial use; see the contact information below.
- Use this Program, or permit use of this Program, on more than one computer, computer terminal, or workstation at the same time.
- Make copies of this Program or any part thereof, or make copies of the materials accompanying this Program.
- Copy this Program onto a hard drive or other storage device; you must run this Program from the included CD-ROM (although this Program itself may automatically copy a portion of this Program onto your hard drive during installation in order to run more efficiently).
- Use the program, or permit use of this Program, in a network, multi-user arrangement or remote access arrangement, including any online use, except as otherwise explicitly provided by this Program.
- Sell, rent, lease, license, distribute or otherwise transfer this Program, or any copies of this Program, without the express prior written consent of Activision.
- Reverse engineer, derive source code, modify, decompile, disassemble, or create derivative works of this Program, in whole or in part.
- Remove, disable or circumvent any proprietary notices or labels contained on or within the Program.
- Export or re-export this Program or any copy or adaptation in violation of any applicable laws or regulations. By using this Program you are warranting that you are not a "foreign person," as defined by U.S. government regulations, or under the control of a foreign person.

**LIMITED WARRANTY.** Activision warrants to the original consumer purchaser of this Program that the recording medium on which the Program is recorded will be free from defects in material and workmanship for 90 days from the date of purchase. If the recording medium is found defective within 90 days of original purchase, Activision agrees to replace, free of charge, any product discovered to be defective within such period upon its receipt of the Product, postage paid, with proof of the date of purchase, as long as the Program is still being manufactured by Activision. In the event that the Program is no longer available, Activision retains the right to substitute a similar program of equal or greater value. This warranty is limited to the recording medium containing the Program as originally provided by Activision and is not applicable to normal wear and tear. This warranty shall not be applicable and shall be void if the defect has arisen through abuse, mistreatment, or neglect. Any implied warranties prescribed by statute are expressly limited to the 90-day period described above.

EXCEPT AS SET FORTH ABOVE, THIS WARRANTY IS IN LIEU OF ALL OTHER WARRANTIES, WHETHER ORAL OR WRITTEN, EXPRESS OR IMPLIED, INCLUDING ANY WARRANTY OF MERCHANTABILITY, FITNESS FOR A PARTICULAR PURPOSE OR NON-INFRINGEMENT, AND NO OTHER REPRESENTATIONS OR CLAIMS OF ANY KIND SHALL BE BINDING ON OR OBLIGATE ACTIVISION.

When returning the Program for warranty replacement please send the original product disks only in protective packaging and include: (1) a photocopy of your dated sales receipt; (2) your name and return address typed or clearly printed; (3) a brief note describing the defect, the problem(s) you are encountered and the system on which you are running the Program; (4) if you are returning the Program after the 90-day warranty period, but within one year after the date of purchase, please include check or money order for \$15 U.S. (A\$25 for Australia) currency per CD or floppy disk replacement. Note: Certified mail recommended.



In the U.S. send to:  
Warranty Replacements  
Activision, Inc.  
P.O. Box 67713  
Los Angeles, California 90067

**LIMITATION ON DAMAGES.** IN NO EVENT WILL ACTIVISION BE LIABLE FOR SPECIAL, INCIDENTAL OR CONSEQUENTIAL DAMAGES RESULTING FROM POSSESSION, USE OR MALFUNCTION OF THE PROGRAM, INCLUDING DAMAGES TO PROPERTY, LOSS OF GOODWILL, COMPUTER FAILURE OR MALFUNCTION AND, TO THE EXTENT PERMITTED BY LAW, DAMAGES FOR PERSONAL INJURIES, EVEN IF ACTIVISION HAS BEEN ADVISED OF THE POSSIBILITY OF SUCH DAMAGES. ACTIVISION'S LIABILITY SHALL NOT EXCEED THE ACTUAL PRICE PAID FOR THE LICENSE TO USE THIS PROGRAM. SOME STATES/COUNTRIES DO NOT ALLOW LIMITATIONS ON HOW LONG AN IMPLIED WARRANTY LASTS AND/OR THE EXCLUSION OR LIMITATION OF INCIDENTAL OR CONSEQUENTIAL DAMAGES, SO THE ABOVE LIMITATIONS AND/OR EXCLUSION OR LIMITATION OF LIABILITY MAY NOT APPLY TO YOU. THIS WARRANTY GIVES YOU SPECIFIC LEGAL RIGHTS, AND YOU MAY HAVE OTHER RIGHTS WHICH VARY FROM JURISDICTION TO JURISDICTION.

**TERMINATION.** Without prejudice to any other rights of Activision, this Agreement will terminate automatically if you fail to comply with its terms and conditions. In such event, you must destroy all copies of this Program and all of its component parts.

**U.S. GOVERNMENT RESTRICTED RIGHTS.** The Program and documentation have been developed entirely at private expense and are provided as "Commercial Computer Software" or "restricted computer software." Use, duplication or disclosure by the U.S. Government or a U.S. Government subcontractor is subject to the restrictions set forth in subparagraph (c)(1)(ii) of the Rights in Technical Data and Computer Software clauses in DFARS 252.227-7013 or as set forth in subparagraph (c)(1) and (2) of the Commercial Computer Software Restricted Rights clauses at FAR 52.227-19, as applicable. The Contractor/Manufacturer is Activision, Inc., 3100 Ocean Park Boulevard, Santa Monica, California 90405.

**INJUNCTION.** Because Activision would be irreparably damaged if the terms of this Agreement were not specifically enforced, you agree that Activision shall be entitled, without bond, other security or proof of damages, to appropriate equitable remedies with respect to breaches of this Agreement, in addition to such other remedies as Activision may otherwise have under applicable laws.

**INDEMNITY.** You agree to indemnify, defend and hold Activision, its partners, affiliates, contractors, officers, directors, employees and agents harmless from all damages, losses and expenses arising directly or indirectly from your acts and omissions to act in using the Product pursuant to the terms of this Agreement

**MISCELLANEOUS.** This Agreement represents the complete agreement concerning this license between the parties and supersedes all prior agreements and representations between them. It may be amended only by a writing executed by both parties. If any provision of this Agreement is held to be unenforceable for any reason, such provision shall be reformed only to the extent necessary to make it enforceable and the remaining provisions of this Agreement shall not be affected. This Agreement shall be construed under California law as such law is applied to agreements between California residents entered into and to be performed within California, except as governed by federal law and you consent to the exclusive jurisdiction of the state and federal courts in Los Angeles, California.

If you have any questions concerning this license, you may contact Activision at 3100 Ocean Park Boulevard, Santa Monica, California 90405, (310) 255-2000, Attn. Business and Legal Affairs.





Activision, Inc. P.O. Box 67713, Los Angeles, CA 90025

Distributed by Activision. Activision is a registered trademark of Activision, Inc. © 1998 Egmont Foundation. JUDGE DREDD™, the character, names, representations and all other elements are trademarks used under license from Egmont Foundation. © 1998 Gremlin Interactive Ltd. Licensed from and developed by Gremlin Interactive Ltd. All rights reserved. All other trademarks and trade names are the properties of their respective owners.

Licensed by Sony Computer Entertainment America for use with the PlayStation game console. PlayStation and the PlayStation logos are trademarks of Sony Computer Entertainment Inc. The ratings icon is a trademark of the Interactive Digital Software Association. Manufactured and printed in the U.S.A. THIS SOFTWARE IS COMPATIBLE WITH PLAYSTATION GAME CONSOLES WITH THE NTSC U/C DESIGNATION. U.S. AND FOREIGN PATENTS PENDING.

